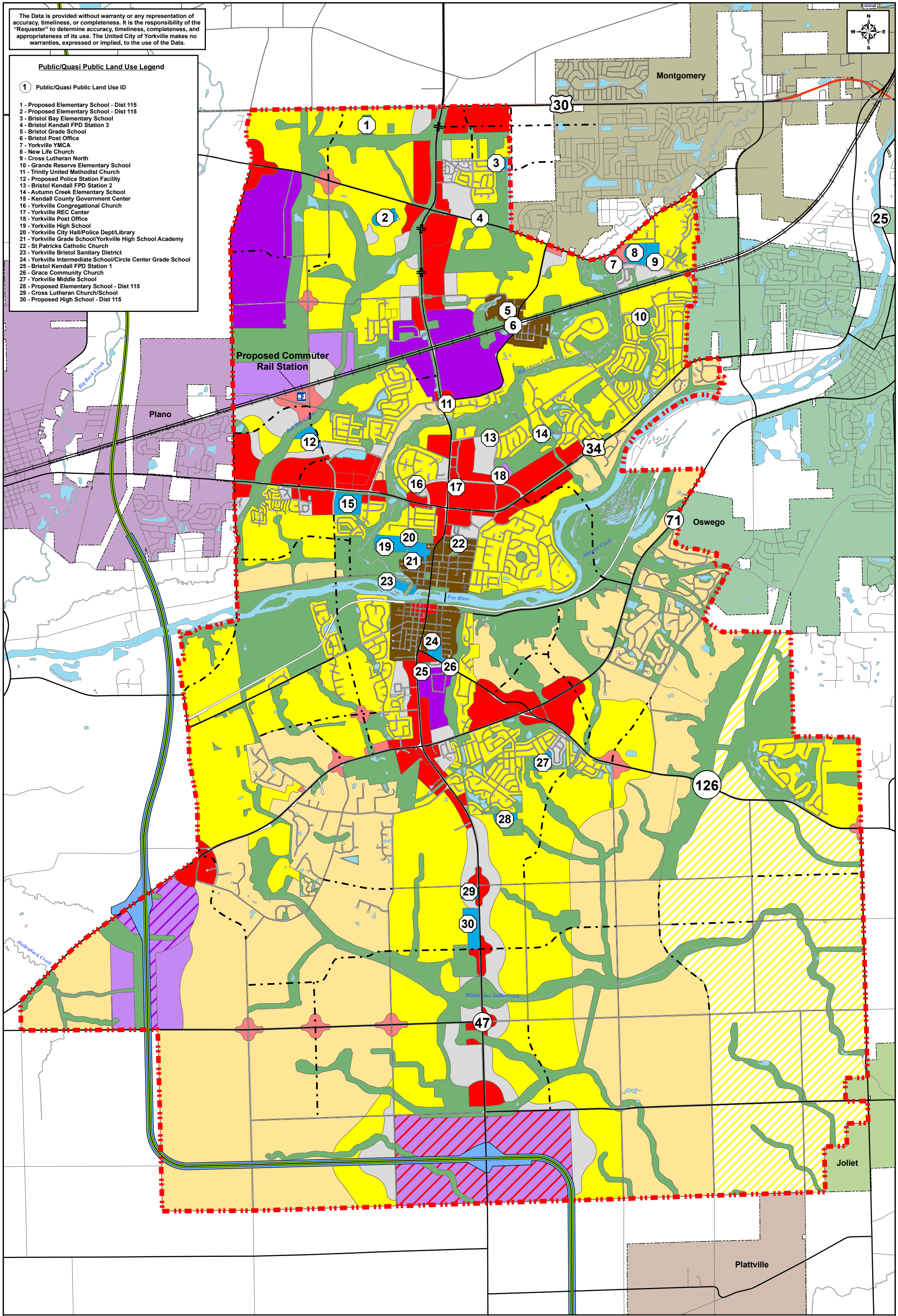


The Data is provided without warranty or any representation of accuracy, timeliness, or completeness. It is the responsibility of the "Requester" to determine accuracy, timeliness, completeness, and appropriateness of its use. The United City of Yorkville makes no warranties, expressed or implied, to the use of the Data.

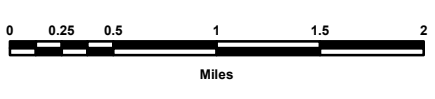


Public/Quasi Public Land Use Legend

- ① Public/Quasi Public Land Use ID
- 1 - Proposed Elementary School - Dist 115
 - 2 - Proposed Elementary School - Dist 115
 - 3 - Bristol Bay Elementary School
 - 4 - Bristol Kendall FPD Station 3
 - 5 - Bristol Grade School
 - 6 - Bristol Post Office
 - 7 - Yorkville YMCA
 - 8 - New Life Church
 - 9 - Cross Lutheran North
 - 10 - Grande Reserve Elementary School
 - 11 - Trinity United Methodist Church
 - 12 - Proposed Police Station Facility
 - 13 - Bristol Kendall FPD Station 2
 - 14 - Autumn Creek Elementary School
 - 15 - Kendall County Government Center
 - 16 - Yorkville Congregational Church
 - 17 - Yorkville REC Center
 - 18 - Yorkville Post Office
 - 19 - Yorkville High School
 - 20 - Yorkville City Hall/Police Dept/Library
 - 21 - Yorkville Grade School/Yorkville High School Academy
 - 22 - St Patricks Catholic Church
 - 23 - Yorkville Bristol Sanitary District
 - 24 - Yorkville Intermediate School/Circle Center Grade School
 - 25 - Bristol Kendall FPD Station 1
 - 26 - Grace Community Church
 - 27 - Yorkville Middle School
 - 28 - Proposed Elementary School - Dist 115
 - 29 - Cross Lutheran Church/School
 - 30 - Proposed High School - Dist 115



**United City of Yorkville
2008 Land Use Plan**
October 28, 2008



Yorkville Planning Area	Suburban Neighborhood	Parks/Open Space
Locally Proposed Roads	Industrial	Commercial/Office Research
Prairie Parkway B5 Alignment	Traditional Neighborhood	Office/Research
Prairie Parkway ROW	Rural Neighborhood	Public/Quasi Public
	Estate Neighborhood	Industrial/Office Research
	Neighborhood Retail	Commercial
		Mixed Use

United City of Yorkville GIS